

The IHE logo consists of the letters 'IHE' in a bold, dark blue, sans-serif font. A vertical line is positioned to the right of the letters, separating them from the tagline.

IHE

Integrating
the Healthcare
Enterprise

A stylized globe showing the continents of North and South America, rendered in a light purple color. It is positioned in the lower-left quadrant of the slide, partially overlapping the IHE logo and the title text.

Basic Image Review (BIR)

David Clunie – PixelMed

BIR – Profile Abstract

- *“define the appropriate baseline functionality & behaviors for viewing software on CD”*
- *“defines baseline functions and user interface relevant to simple review of DICOM images”*
- *“potentially applicable to all Image Displays”*
- *“specific requirements that pertain to the use of Image Displays included on PDI media”*
- *“a named option for the PDI Profile”*

BIR – Problem Statement

- Physician frustration:
 - viewers do not run successfully
 - viewers do not load the images successfully
 - the viewer loads too slowly
 - the viewer claims to be "not of diagnostic quality"
 - functions critical to review are missing from the viewer
 - viewers have unique user interfaces that do not provide obvious access to basic functions
- Impact
 - delayed care
 - inaccessible information
 - repeat examination and irradiation
 - poor use of valuable clinician time

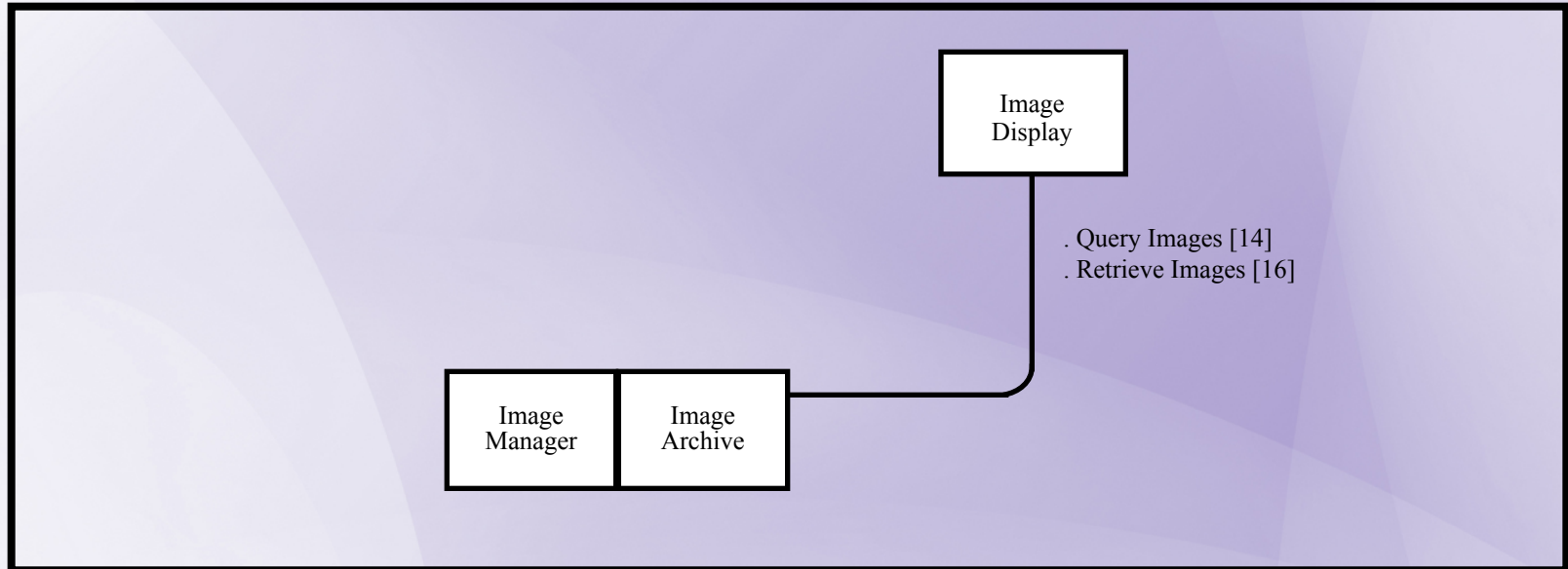
BIR – Use cases

- Basic Viewer Option (PDI Profile - Media Creator)
 - physician viewing of media
 - operating Room viewing of media
 - patient viewing of media
- Basic Imaging Review Profile
 - viewing from PACS/VNA within the enterprise
 - viewing from PACS/VNA outside the enterprise
 - viewing from other enterprise
 - viewing from regional/national archive
 - viewing through EHR/PHR

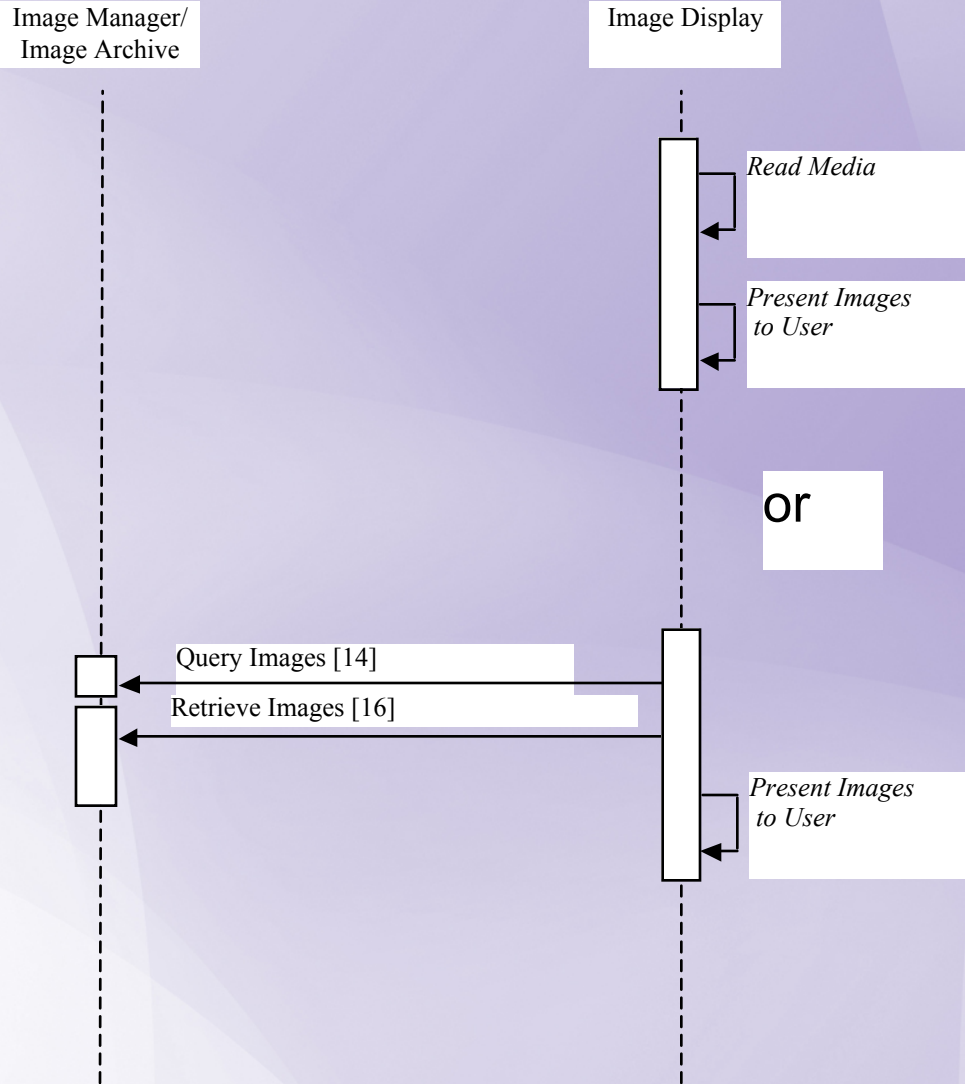
BIR – Value Proposition

- Increase physician satisfaction
- Increase physician efficiency
- Reduce training burden
- Reduce technical support burden
- Reduce repeat studies
- Reduce delays & errors in patient care

BIR – Actors and Transactions



BIR – Process Flow



BIR – Image Display – Behavior - I

- Display of grayscale and color images from any modality
- Cross-sectional modalities like CT, MR and PET
- Projection radiography modalities like CR, DX, XA and XRF
- Ultrasound and nuclear medicine
- Basic rendering of the images as encoded
- Without additional image processing
- No pseudo-coloring, MPR, volume rendering, fusion

BIR – Image Display – Behavior - II

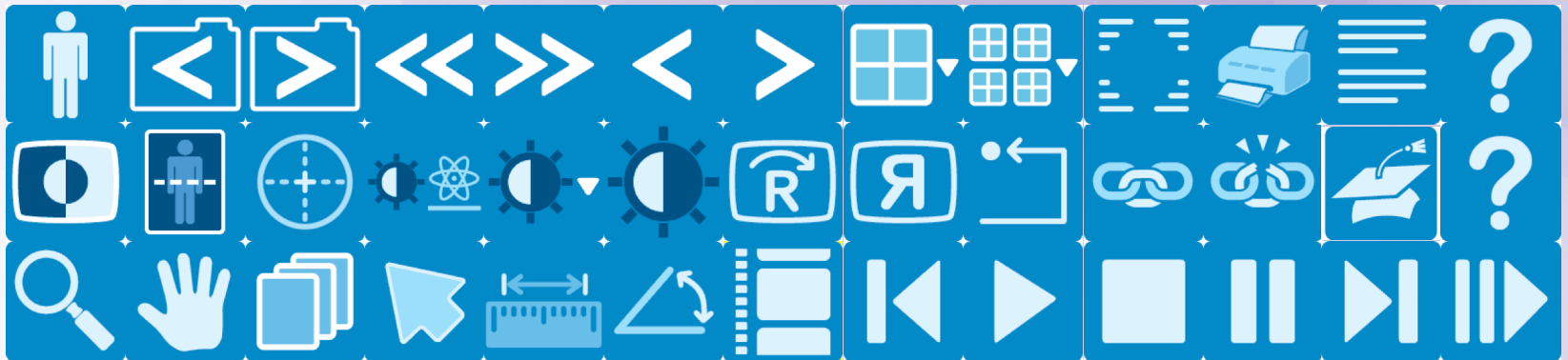
- Visual navigation of series of single and multi-frame images using thumbnails
- Side-by-side comparison of at least two sets of images, whether they be multi-frame images, series from the same study, or different studies
- Synchronized scrolling, panning and zooming
- Annotation of laterality, orientation
- Spatial localization of cross-sectional images for anatomic reference
- Annotation of demographics, management and basic technique information

BIR – Image Display – Behavior - III

- Simple measurements of linear distance and angle as used by clinicians for change detection and treatment planning
- Cine capability to allow review of multi-frame images that involve cardiac motion (e.g., cardiac US, XA, CT or MR)
- NO ADDITIONAL FUNCTIONALITY PERMITTED
- OK to have a tool to select “advanced mode”

BIR – Standard User Interface Behavior

- Direction of mouse movement (e.g., windowing, scrolling)
- Mouse actions (left button click)
- Keyboard shortcuts
- Icons – “*not intended to be used exactly with the bitmap illustrated ... as long as they are recognizable as being the same symbol*” – based on IEC 60878 symbols if possible



BIR - Conclusion

- BIR improves user experience for both CD/DVD viewers and “on-line” viewers
- Minimum set of features defined by expert panel of representative referring physicians
- Too much, too little or just right?
- Does not preclude vendor-specific added value through “advanced mode” but does require adherence to design principles and standard user interface requirements in “standard mode”
- Challenging where there is an installed base of viewers or existing “look and feel”